

# bigchalk Integrated Classroom

bigchalk Integrated Classroom™ is an easy-to-use online curriculum toolkit that provides both new and experienced teachers with current and archival information, activities, and lesson plans aligned to grade level, subject, textbook, and learning standard. Using these resources, teachers can effectively guide student understanding and propel student progress—wherever students are along the learning continuum.

## Supporting standards, aligning content

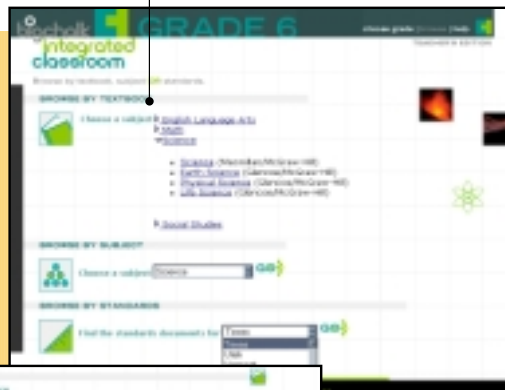
bigchalk Integrated Classroom delivers educators supplemental content for instruction that aligns to their district's curriculum and standards. Through an easy-to-use web interface, educators quickly access relevant, expert-selected resources—so there's no guesswork involved. Educators will find thousands of lesson plans, web links, audio and video files, and magazine, newspaper, and reference articles. This content can be embedded into instruction, and accessed by both teachers and students from school or home.

Educators can select from four methods to locate instructional content for each K-12 grade and subject. The Subject view provides resources for more than 100 most-studied topics. The Textbook view presents resources mapped to the most widely used textbooks. The State Standards view allows users to browse resources correlated to state standards and assessments. And, Search Standards allows educators to search by keyword across a core subject standard—quickly targeting instructional content correlated to specific learning outcomes.

In addition to the national learning standards and high-use textbooks that comprise the core of the system, a district can opt for local customization—enabling Integrated Classroom to align online resources to the district's specific array of textbooks and standards.

New teachers, substitute teachers, seasoned teachers, and teachers assigned to a new subject will all find that bigchalk Integrated Classroom augments and enhances classroom instruction with relevant, high-quality online information matched to student needs.

Create engaging instructional experiences for student remediation or enrichment by finding content aligned to grade level, textbook, subject, or standard



Discover thousands of relevant resources like full-text articles, lesson plans, web links, media clips, interactives, and images

## The best of bigchalk's information resources

### State and National Standards

Integrated Classroom makes the connections to standards by offering aggregated correlations provided by MediaSeek—the standard of standards. The MediaSeek Knowledge Base includes more than 170 state, district, and national learning and assessment standards for English Language Arts, Mathematics, Science, Social Studies, Health, and Technology. These include the core subject standards for every state, plus major national standards such as National Mathematics Standards (NCTM) and NETS Standards for Students.

### bigchalk Library Articles

Users will find a multitude of selected articles from magazines and journals, newspapers and newswires, encyclopedias, and other reference resources. These articles come from the more than 1,200 diverse resources found in the bigchalk Library database. bigchalk Library provides Integrated Classroom both currency and perspective on a wide range of K-12 subjects and topics from well-known sources such as *World Book Encyclopedia*, *National Public Radio (NPR)*, *Scholastic*, and *The New York Times*.

### bigchalk Media Resources

Integrated Classroom delivers a diverse and engaging collection of relevant multimedia resources including streaming audio and video clips, animations, pictures, maps, diagrams, and more. These files are selected from the more than 500,000 licensed multimedia resources available from bigchalk. These resources include thousands of topical, historical, and geographical maps; tens of thousands of media clips—both historical and current; and hundreds of thousands of photos, images, works of art, and more.

### Best of Web Links and Lesson Plans

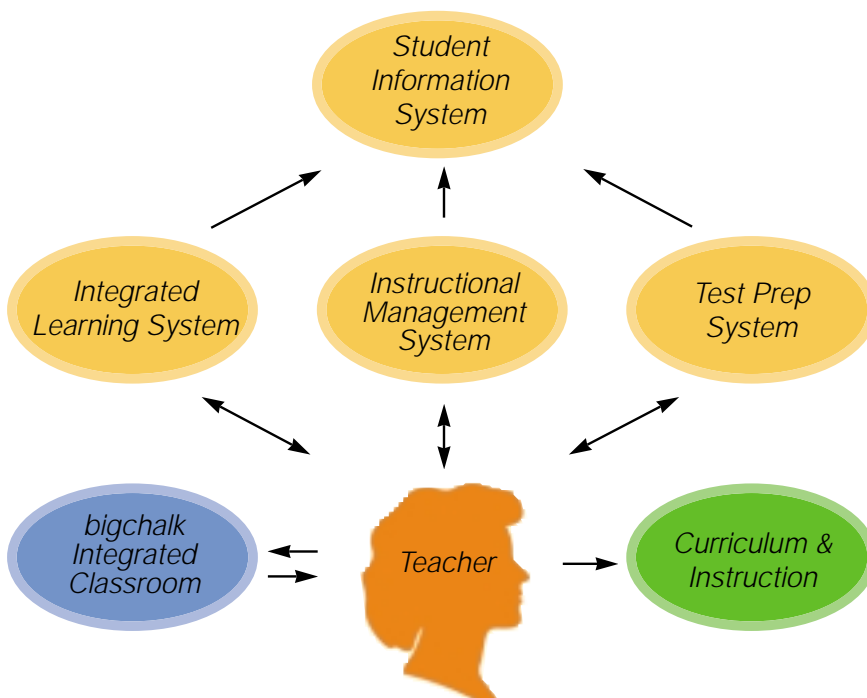
Integrated Classroom pulls web sites from our proprietary educational web directory—a collection of more than 150,000 editor-selected web links and 14,000 lesson plans aligned to more than 10,000 topics relevant to K-12. These web links and lesson plans are monitored regularly to ensure they are safe, appropriate, and accessible for teachers and students.

information resources

## With bigchalk Integrated Classroom, educators can:

- Target resources to address NCLB requirements including Teacher Excellence, Reading First, and Enhancing Education through Technology
- Access a rich library of content resources aligned to grade level, standard, textbook, and subject
- Save time and reduce information overload by searching across relevant, expert-selected content for instruction
- Navigate an easy-to-use interface that facilitates curriculum alignment and technology integration
- Use the toolkit from school or home for flexible planning
- Find multimedia resources that help students with varied learning styles
- Locate quality resources and activities aligned to individual student needs—from remediation to enrichment

## How does bigchalk Integrated Classroom complement your district's current technology systems?



bigchalk Integrated Classroom places the teacher at the heart of curriculum development and instruction, making them the pivot point between your existing information systems and student needs. This results in teachers effectively targeting resources for student acceleration or remediation, as identified by district information systems, to directly advance student achievement.

# bigchalk Teaching & Learning Series

Professional development for practical, powerful technology integration

bigchalk Teaching & Learning Series™ provides educators with professional development solutions for research-based implementations of standards-aligned curriculum. These technology-infused courses include subscriptions to bigchalk Integrated Classroom for use as an exemplary standards-based online instructional resource in the classroom.

## Courses available for 2002-2003:

**Preparation, Planning, & Presentation: Teaching Strategies for Standards-based Student Achievement Using Internet Tools and Strategies.**

**Course outline:** the course will help teachers understand and find resources on the Internet; use the Internet as a teacher resource and teacher/student collaborative tool; teach to standards with the use of the Internet; utilize bigchalk Integrated Classroom to search for resources by textbook, standard, or topic; and plan, create, and present a lesson.

**Presentation & Collaborative Learning: The Teacher as Information Guide**

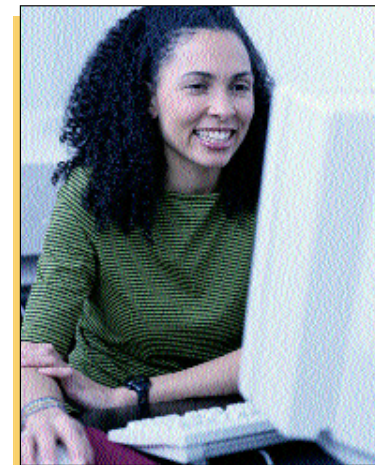
**Course outline:** the course will help teachers understand bigchalk Integrated Classroom and its use as a teacher/student collaborative tool; use the Internet for independent student activities; develop and foster student research and presentation competencies; and promote the ongoing development of an e-learning classroom.

## Building a solid foundation for the future

The bigchalk Teaching & Learning Series makes successful implementation and ongoing use of online instructional material easy. It helps educators and administrators explore and better understand not only how, but also why online tools and content can ease and enhance curriculum development and instruction in the classroom.

The courses provide educators with research-based integration strategies and tools for customizing instruction and assessment using the Internet and bigchalk resources. These courses offer schools the materials they need to build professional development and instructional models that can maximize teacher readiness and effectiveness, and improve student achievement.

Developed in partnership with the respected professional development provider T.H.E. Institute, Teaching & Learning Series courses address both teacher-centric and student-centric models of instruction. Teacher-centric models include teachers using electronic resources to support lesson planning, or as part of a traditional classroom instructional strategy. Student-centric models can include students using a resource or program collaboratively in the classroom, for joint project work in a lab, or for self-paced learning. The variety of methods, research indicates, work most effectively because students have multiple learning styles.







## About T.H.E. Institute

T.H.E. Institute is the professional development division of T.H.E. (Technology Horizons in Education). Established in 1996, T.H.E. Institute offers educators a complete range of professional development services—anytime, anywhere and in any delivery medium. The division offers on-site, online, and site-to-web professional development for graduate credit or for continuing education.

## Implementation Overview

Implementing online instructional technology in schools is easy with bigchalk—no matter the school's technology sophistication level. The bigchalk Teaching & Learning Series offers strategies to support a variety of implementation models based on audience, usage, and computer locations. The chart below illustrates usage scenarios and locales encountered in a typical school.

Preparation & Planning	Presentation & Demonstration	Collaboration	Independent Study
			
Customization for instruction, lesson planning, and assessment preparation	Classroom presentation—supports single computer classroom with monitor and one Internet connection	Classroom collaboration—supports multiple-computer classrooms with small groups and/or individual instruction	Independent and self-paced study—teacher assigned readings, research, test review, and assignments outside of classroom hours
Print support and copyright clearance	Direct instruction—teacher directed classroom instruction, assignments, and assessment	Library—supports out-of-class assignments, research, reading, and review for group and/or individual	Library—supports out-of-class assignments, research, reading, and review for group and/or individual
Professional presentations and training	Presentations at professional meetings, community presentations, board discussions	Technology lab—supports scheduled computer time for a group and/or individuals	Parental involvement—parental support and monitoring of student's teacher-assigned work via home access
24/7 remote access—supports access from: <ul style="list-style-type: none"> <li>• School computer before/after school hours</li> <li>• Home computer</li> <li>• Public library computer</li> </ul>	Presentations to community groups or to other schools to discuss programs and projects	Email and online project development with homebound students, traveling students, or students in other schools	24/7 remote access—supports access from: <ul style="list-style-type: none"> <li>• School computer before/after school hours</li> <li>• Home computer</li> <li>• Public library computer</li> </ul>
Initial Implementation ←		→ Enduring Solution	

Call **800.860.9228** today to learn more about bigchalk Integrated Classroom and the bigchalk Teaching & Learning Series.

Visit our web site at **www.bigchalk.com/bc/pic** to learn more about our resources for the library, professional development, instruction and curriculum, and the web.

### About bigchalk

bigchalk, the digital learning source for education, harnesses the power of online content to create engaging learning environments that promote student achievement. The company offers up-to-date online reference databases, standards-based digital curriculum at all levels, and easy-to-use tools for professional development and lesson planning.



**1000 Chesterbrook Blvd.  
Suite 111  
Berwyn, PA 19312**

**800.860.9228  
www.bigchalk.com**