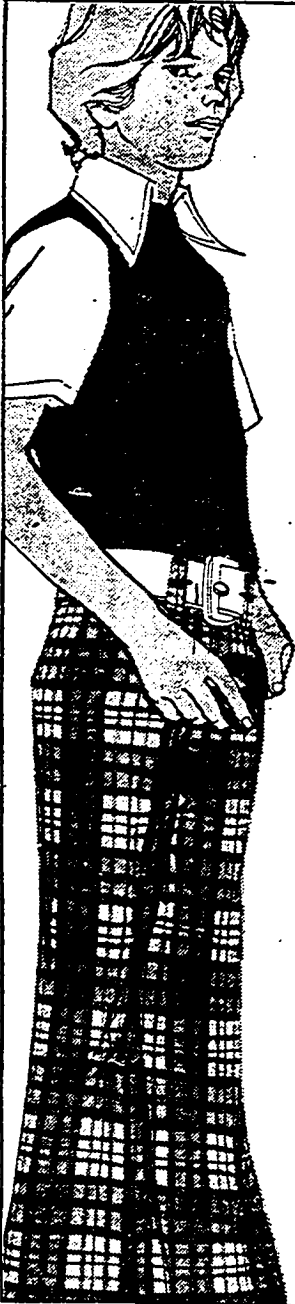


# School time coordinates. Our great buys for boys are well worth studying!

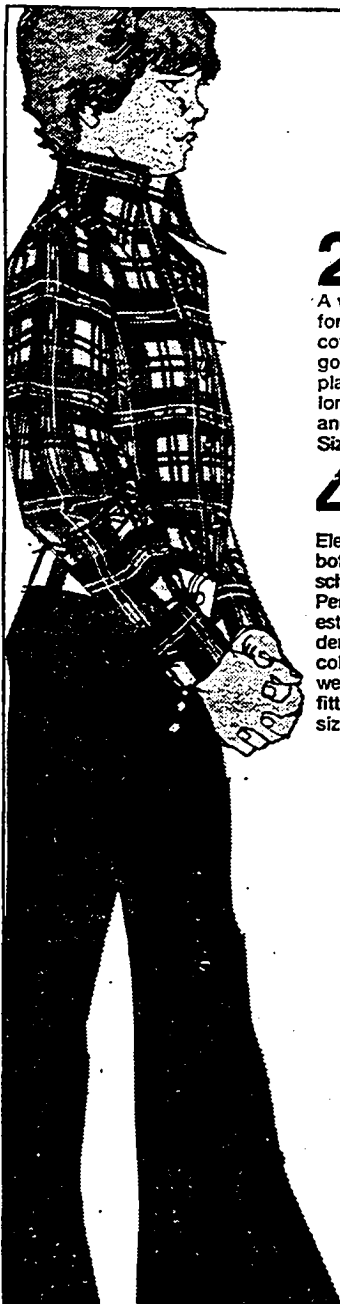


**398**

Boys' short sleeve polyester/cotton shirts are great for back to school wear. Choose zipper fronts, Wallace Beery or styles with collars. Assorted colors, sizes 6-20.

**598**

The baggy look in jeans for school-age boys. Penn Prest® polyester/cotton with cuffs and top front pockets. Patterned in sizes 8-20.

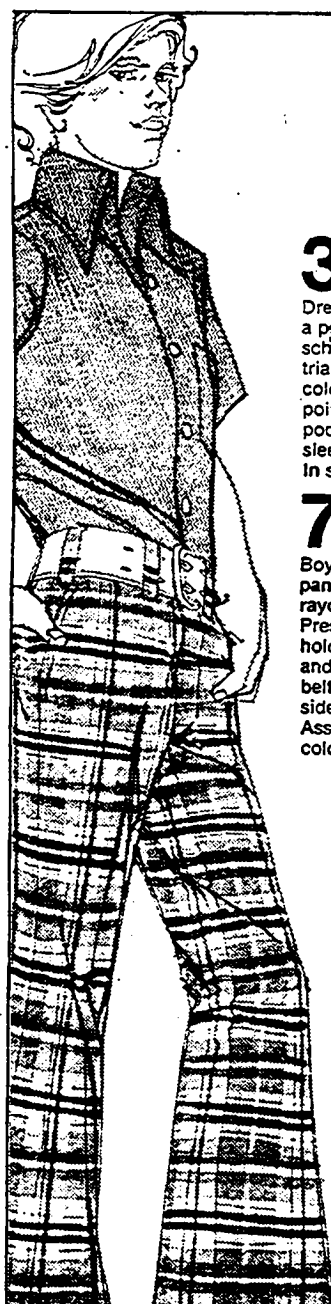


**298**

A versatile shirt for boys, 100% cotton flannel in good looking plaid. Styled with long point collar and long sleeves. Sizes 8-18.

**498**

Elephant bell bottom jeans for school-age boys. Penn Prest® polyester/cotton denim in assorted colors. Long wearing and great fitting in sizes 8-20.



**350**

Dress shirt for boys, a perfect look for school in polyester triacetate. Solid color twill with long point collar, chest pocket and short sleeves. In sizes 8-18.

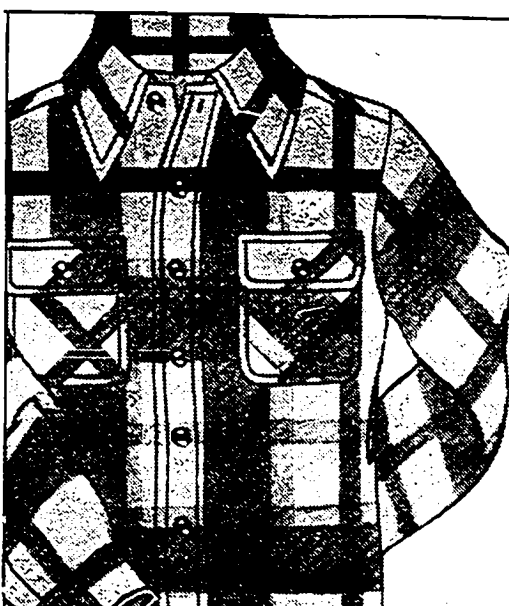
**798**

Boys' cuffed dress pants of polyester/ rayon plaid. Penn Prest® to always hold their shape and style. Flare leg, belt loops and top side pockets. Assorted plaids and colors, sizes 8-20.



**598**

Boys' cotton denim western style jacket in navy. A great look with chest snap pockets, snap front and shirt style collar. Berry, chocolate or green in polyester/cotton. 8-20.



**1198**

C.P.O. jacket for boys in unlined acrylic plaid. Styled with two patch pockets, shirt collar, cuffs and yoke placket front. In blue, brown or green plaids. Sizes 8-20.

For more great buys shop the JCPenney Catalog.

Buy now, pay later. Use a JCPenney Charge.

## JCPenney

We know what you're looking for.

Open Daily 10 a.m. to 9:30 p.m.



Charge It at JCPenney  
 Interstate 91 and Elm St.



Charge It at JCPenney  
 Rt. 66 and Lewis Ave.